

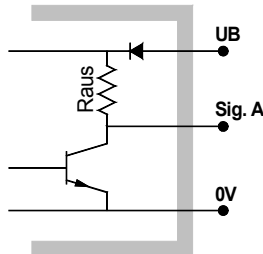
Mag. Impulsgeber HDI1-NW22/L14-61-P100E

Mag. Pulse Sensor HDI1-NW22/L14-61-P100E

Kabel / Cable: Länge / Length 100cm
offenes Ende / open End

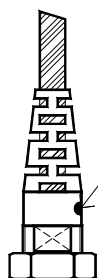
Kabelbelegung / Connection:

UB = 7 ... 30 VDC braun / brown
0V grün / green
Spur / Channel A gelb / yellow
NC weiss / white
Raus 2,2kOhm



Tech. Parameter

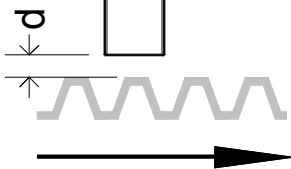
Signalausgang / Signal output OC-NPN
Strombelastbarkeit / Output current max. 20mA
Messfrequenz / Oper. frequency 0,010 ... 5 kHz
Arbeitstemp. / Operating temp. -30 ... 150°C



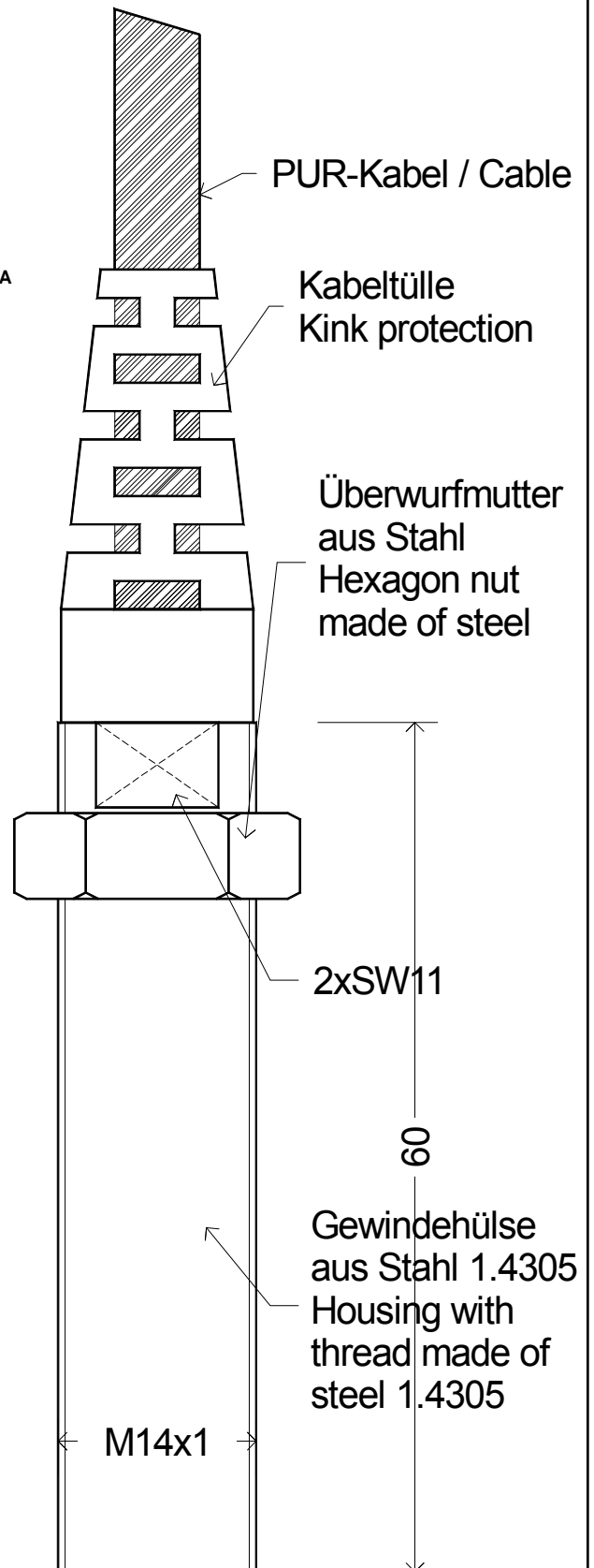
Markierung
Marking

M	d
1,0	max. 1,0 mm
1,5	max. 1,25 mm
2,0	max. 1,5 mm

M = Zahnmodul / Gear module



Bewegungsrichtung Zahnrad / Zahnstange
Direction of motion of gear wheel / rack



Material Stahl	Allgemeintoleranzen ISO 2768 - f	Dateiname ML1461DINW22	Datum 25.04.2012	Maßstab 2:1
VS Sensorik GmbH		HDI1-NW22/L14-61-P100E		
		12VS042501	Version 1	Blatt 1